



 BradyJet™

# J7300

## Unleash your true colours

Industrial excellence. Innovative ease. Inkjet elevated.

**COLOUR LABEL PRINTER**



# Full colour. Complete durability.

# **THE TOTAL PACKAGE**

**Make a statement with inkjet made for industrial spaces.**

Pivot through a demanding print queue with the BradyJet™ J7300 Colour Label Printer. Make an impact with vibrant full colour. Print on industrial-strength labels. And say goodbye to time-wasting setup thanks to built-in LabelSense™ print technology. Any colour, any information — do exactly what the job demands from the production line to the lab with the J7300.



## **Set up in seconds**

Just drop, lock and go. LabelSense™ technology instantly recognises and sets up label rolls and inks, and prints on the very first label.



## **Print any colour, job after job**

Make labels that are unmistakable. Dual CMY and true black (K) ink cartridges deliver vibrant colours and deeper darks.



## **Make labels that last**

Full colour and durability now work together. Instant-drying inks and indoor/outdoor-durable labels resist water, chemicals and abrasions.



## **Work into your workflows**

Label creation software is included. Windows® driver pulls in third-party software and PDFs. Connect it all via USB, Wi-Fi or ethernet.



 **BRADY.**

DOB 11/17/00  
ID: 6789-C  


▶ Learn more at [BradyID.com.au/37300](https://BradyID.com.au/37300) or scan to watch the overview video.



# PRINT READY, SET, GO!

## Power it on. Get it done.

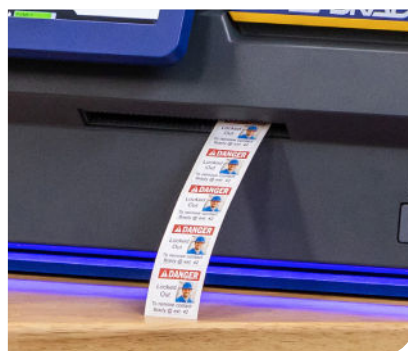
With the power of automatic LabelSense™ print technology, the J7300 stands ready to print whatever you need at a moment's notice. And because you only need blank-white label material, you're ready to go from sharp barcodes to colour-coded lab labels to vivid full-colour photo tags — all with zero to minimal material changes and waste.

## KEY FEATURES



### 20-second loading

- ▶ Drop-lock-print technology
- ▶ Printer instantly recognises label rolls and ink cartridges
- ▶ Auto setup eliminates manual calibration and threading



### Prints on the first label

- ▶ Minimal waste
- ▶ No manual trial and error
- ▶ Streamlined label inventory and changeovers



### Any colour, any information – fast

- ▶ Colours closely approach or meet ANSI, GHS, BS 5609, ISO and arc flash compliance
- ▶ Vibrant graphics, photos and logos
- ▶ True black ink cartridge for sharp barcodes and clear printed text

Enjoy fast, industrial-grade colour and production for variable print jobs.



### Labels that last years

- ▶ Industrial-strength labels last up to 2 years outdoors and even longer indoors
- ▶ Instant-drying ink won't smudge, smear or spot
- ▶ Labels and inks boast water, chemical and abrasion resistance



### Seamless create and connect

- ▶ USB, Wi-Fi or ethernet connectivity
- ▶ Brady Workstation premade templates, graphics keyword search and colour palettes
- ▶ Optimised Windows driver pulls in PDFs and third-party software



### Information at a glance

- ▶ LED lighting communicates real-time printer status
- ▶ Clear cover for print job visibility
- ▶ Print Utility dashboard helps you plan, budget and troubleshoot

 **BradyJet™ J7300** Colour Label Printer

# Power and production FROM ON TO OUTPUT

Do your best work with a printer built to handle a variety of applications, dynamic colour needs and changing label data.

## Sustainable design

Label cartridges made with recyclable components and minimal plastic.

## 150 ft / 45 m roll capacity

Longer material rolls reduce changeovers and keep print jobs printing.

## Rugged construction

Solid construction stands up to industrial conditions.

## LED lighting

Reactive lighting gives you real-time printer status alerts.



### Clear cover

Get a view into what's printing and when.



### A CMY + true black (K)

Dual ink cartridges mix more vibrant colours and deeper darks.



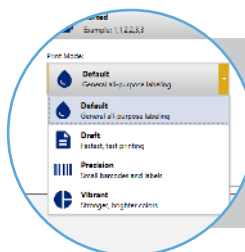
### B Auto cutter

Cuts off material after a job, after a label or not at all.



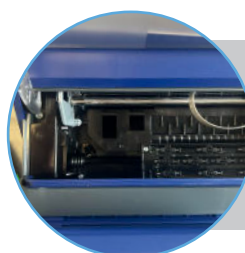
### C Connectivity

Connect how you need via USB, Wi-Fi or ethernet.



### D Print modes

Four selectable modes adjust ink usage to optimise colours.



### E Maintenance

Lifetime maintenance bay eliminates replacements.

### Tilt LCD touchscreen

Pause and resume jobs and get onboard assistance.



### 4 in / 101.6 mm output

Print the labels you need up to 4 in / 101.6 mm wide.

# BUILT-IN SMARTS from start to success

Loaded with time-saving, cost-saving software, the J7300 gives you visibility and command of the entire process.

## Print Utility Dashboard

Plan, budget and troubleshoot from anywhere.



### Remote monitoring

Troubleshoot print jobs and initiate maintenance cycles from anywhere.



### Connected solutions

Connect, command and switch between multiple users and printers.



### Real-time printer health

Get ink cartridge, label roll and printer alerts.



### Job cost calculator

Receive average usage and cost breakdowns by label material and ink.



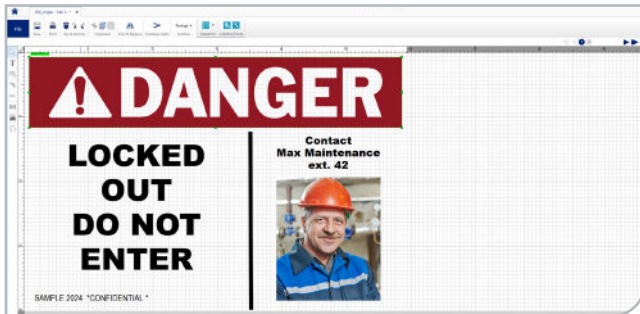
### Exporting

Download and share job history, usage and more.



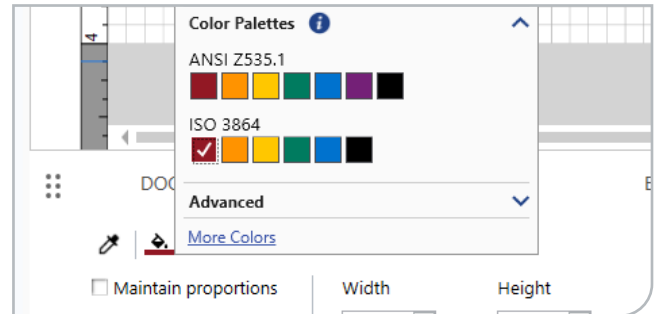
# Brady Workstation Labelling Software

Get everything you need to create the right label fast.



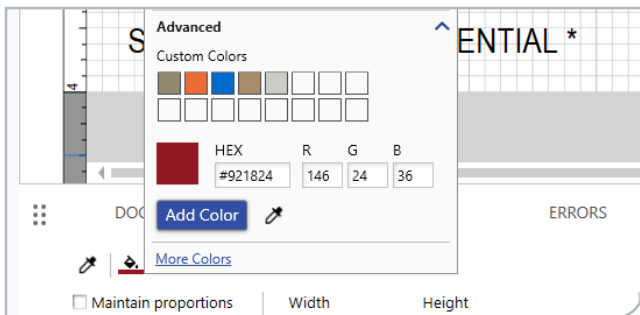
## Premade label layouts

Print common labels custom-worded to your needs.



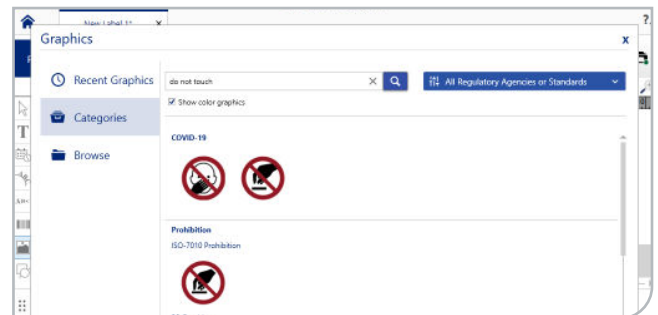
## Regulatory labelling

Find best-match colour palettes, standard templates, wording and more.



## Colour capture

Select any colour you need and save for future use.



## Accessible graphics library

Search and filter by keyword, regulation or agency.

## Optimised Windows® Driver

Connect seamlessly to your data without error or delay.

### ► Coordinated communication

Printer, driver and Print Utility pass information back and forth to ensure continuous printing and real-time updates to ink and material levels.

### ► PDF ready

Easily pull in PDFs for fast printing of custom jobs and one-off requests.

### ► 3rd party software compatible

Connect to the labelling software of your choice in addition to included Brady Workstation.

# THE J7300 PRINTER

## Now with LabelSense™ print technology

### The silent partner of the modern printing pro

Let the technology do the work. You take the credit. Maximise performance and drive down costs with the J7300 and LabelSense™ print technology. This advanced built-in system delivers exclusive functionality where the printer “talks” to the high-performance Brady Authenticated materials and inks to power many innovative, enhanced and automatic features you only get from Brady.



#### Fast setup

No more manual hassles. The J7300 effortlessly identifies and calibrates label materials and inks to set up in seconds. Simply drop, lock and go.



#### Consistent print accuracy

Enjoy unparalleled accuracy as the printer continuously fine-tunes settings to ensure optimal print quality.



#### Cost-efficient adjustments

Minimise waste, maximise productivity and print on the very first label with automated adjustments and maintenance to inks and label rolls.



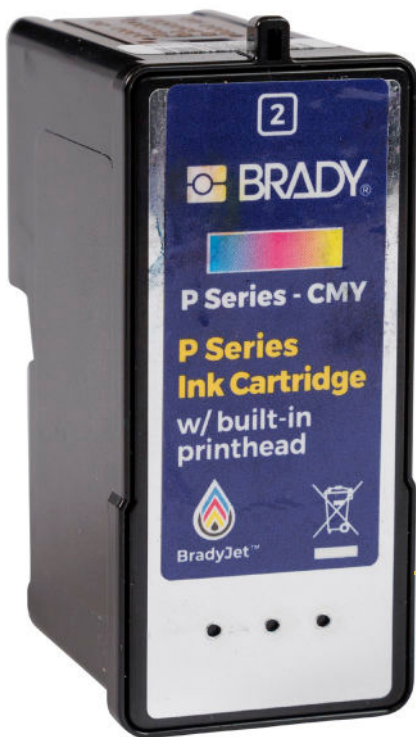
 **BRADY**

# Brilliant colours

# SMART OPERATION

Get better with BradyJet inks. Designed specifically for the J7300, BradyJet ink cartridges produce vibrant, accurate colours, last long and deliver value in every drop.

▶ **Separate strengths.  
Combined power.**



CMY ink cartridge delivers vibrant, full-colour labels that demand attention.



True black ink cartridge delivers a deep black, darker tones, reliable barcode readability and sharp text.

## Avoid going dry mid-print

Get a view into ink usage for past jobs via the Print Utility dashboard to plan timely changeovers. Plus, the printer's LED lighting will switch to orange if an ink cartridge is running low.





**Integrated inks and printhead ensure minimal mess, cleaning and adjustments.**



## Formulated for performance and savings

- ▶ Patented, enhanced topcoats instantly dry inks to eliminate smudges, smears and spots
- ▶ Automatic maintenance cycles ensure printheads don't dry out between uses
- ▶ Self-contained cartridges drop into printer with a click
- ▶ Specially designed cartridge holds up to 50% more ink for longer use, fewer changeovers and less cartridge waste



Smart cell chips enable auto setup and maintenance to prevent clogging.

### Ink Cartridges

176504	J7300 CMY Ink Cartridge (32 mL)
176505	J7300 K Ink Cartridge (37 mL)

Ready for anyone. Design any way.

# PRINT ANYTHING

Unleash your true colours with the BradyJet™ J7300 Colour Label Printer.



# J7300 Printer Kits and Software

Built for industrial demands from the production line to the lab

- ▶ Auto setup, auto calibration and minimal waste
- ▶ Accurate full colour for variable print jobs
- ▶ Dual CMY and true black (K) ink cartridges
- ▶ Precise printing on labels up to 4 in / 101.6 mm wide
- ▶ Industrial-grade labels and inks



## Maximise your J7300 printing experience using Brady Workstation label creation software.

Printer ships with Brady Workstation label creation software, power cord, USB cable, AC adapter, CMY and K ink cartridges with built-in printheads, USB flash drive with drivers and manuals, and J-align media starter roll.

### Catalog #

881582	BradyJet J7300 Printer, Wi-Fi, Brady Workstation SFID Software Suite
881583	BradyJet J7300 Printer, Wi-Fi, Brady Workstation PWID Software Suite
881584	BradyJet J7300 Printer, Wi-Fi, Brady Workstation Lab ID Software Suite



## Full colour. Large labelling.

For full-colour labelling up to 8 in / 203.2 mm wide

### BradyJet™ J4000 Colour Label Printer

For large signage and labelling applications up to 8 in (203.2 mm) wide, check out the BradyJet J4000 Colour Label Printer. It has the features you need to print full colour, complete with easy-to-use capabilities, and prints on durable materials (materials separate from J7300).



# Get the right label from the right company

Designed for you. Made by Brady. Print on materials built for the work you do and the environments you face. Label right on the toughest materials around. And label faster with LabelSense™ technology built into every roll cartridge for automatic setup, calibration and printing on the very first label.

## SAFETY & FACILITY



Pipe Markers

## LAB & CHEMICAL



General Laboratory

## PRODUCT ID



Barcodes



Signage



GHS Labels



Asset ID



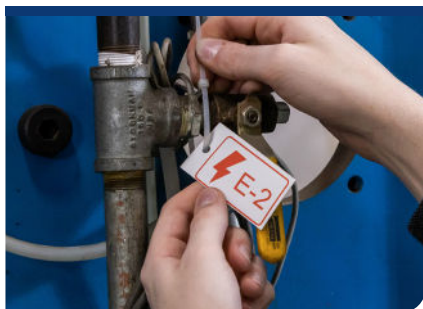
Lockout Tagout



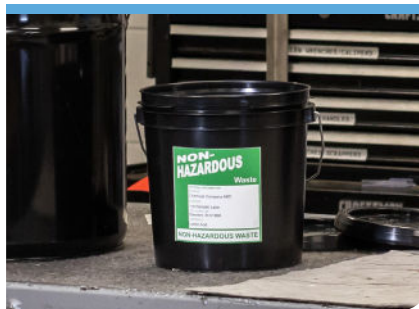
Specimen



Arc Flash Labels



Energy Source Tags



Storage & Disposal



Bins

## BradyGrip® Print-on Hook Labels featuring VELCRO® Brand Hook (B-2414)

- Organise and identify wires and cables using colour with this easily repositionable print-and-place material
- Ideal for wire and cable labelling



Part No.	Description	Width Inch (mm)	Height Feet (m)	Labels Per Roll
176590	JC-1000-2414	1 in. (25.40 mm)	75 ft. (22.86 m)	Continuous

## UL Approved Polyester Labels (B-2475)

- UL safety verification, extra-durable and resistant to abrasions, chemicals, oils and solvents
- Ideal for instructional signage and diagrams, UL product/component ID, work in process, electrical panels, asset labelling, and bin/general labelling



Part No.	Description	Width Inch (mm)	Height Inch (mm)	Labels Per Roll
176592	J-136-2475	1.50 in. (38.10 mm)	0.75 in. (19.05 mm)	1000
176594	J-137-2475	2 in. (50.80 mm)	1 in. (25.40 mm)	1000
176595	J-18-2475	3 in. (76.20 mm)	1 in. (25.40 mm)	1000
176596	J-19-2475	3 in. (76.20 mm)	2 in. (50.80 mm)	750
176593	J-235-2475	1.50 in. (38.10 mm)	1 in. (25.40 mm)	1000
176599	J-25-2475	4 in. (101.60 mm)	6 in. (152.40 mm)	300
176597	J-55-2475	4 in. (101.60 mm)	2 in. (50.80 mm)	750
176591	J-59-2475	1 in. (25.40 mm)	0.50 in. (12.70 mm)	1000
176598	J-76-2475	4 in. (101.60 mm)	3 in. (76.20 mm)	500
176574	JC-1125-2475	1.125 in. (28.58 mm)	150 ft. (45.72 m)	Continuous
176575	JC-2250-2475	2.25 in. (57.15 mm)	150 ft. (45.72 m)	Continuous
176576	JC-4000-2475	4 in. (101.60 mm)	150 ft. (45.72 m)	Continuous

## Freezerbondz™ Cryogenic Polyester Labels (B-2492)

- Apply directly to pre-frozen glass, plastic and stainless steel – labels withstand chemicals, abrasions, storage in liquid nitrogen and -320°F to 212°F (-195°C to 100°C) temperatures
- Ideal for cryogenic applications in labs or any curved, frozen surface



Part No.	Description	Width Inch (mm)	Height Inch (mm)	Labels Per Roll
176647	J-152-2492	1 in. (25.40 mm)	0.375 in. (9.53 mm)	1000
176646	J-156-2492	1.90 in. (48.26 mm)	1 in. (25.40 mm)	1000
176642	J-179-2492	1 in. (25.40 mm)	1 in. (25.40 mm)	1000
176644	J-249-2492	1 in. (25.40 mm)	0.375 in. (9.53 mm)	1000
176643	J-250-2492	1 in. (25.40 mm)	0.50 in. (12.70 mm)	1000
176645	J-251-2492	1 in. (25.40 mm)	0.50 in. (12.70 mm)	1000
176641	J-59-2492	1 in. (25.40 mm)	0.50 in. (12.70 mm)	1000

## Magnetic Labels (B-2509)

- Repositionable labels withstand moderate heat, mild chemicals, oil and water
- Ideal for warehousing racks, bins and storage



Part No.	Description	Width Inch (mm)	Height Feet (m)	Labels Per Roll
170450	JC-2500-2509	2.50 in. (63.50 mm)	25 ft. (7.62 m)	Continuous
170451	JC-4250-2509	4.25 in. (107.95 mm)	25 ft. (7.62 m)	Continuous

## General Purpose Paper Labels (B-2550)

- Light duty, low cost and high contrast with excellent smear resistance
- Ideal for barcoding, quality and control (testing/production, circle labels, date/time), and warehousing racks, bins and storage



Part No.	Description	Width Inch (mm)	Height Inch (mm)	Labels Per Roll
170472	J-18-2550	3 in. (76.20 mm)	1 in. (25.40 mm)	1000
176621	J-19-2550	3 in. (76.20 mm)	2 in. (50.80 mm)	750
176622	J-261-2550	2.95 in. (74.93 mm)	4.33 in. (110.00 mm)	300
176623	J-262-2550	4.13 in. (104.90 mm)	6.1 in. (154.94 mm)	250
176587	JC-1125-2550	1.125 in. (28.58 mm)	150 ft. (45.72 m)	Continuous
176588	JC-2250-2550	2.25 in. (57.15 mm)	150 ft. (45.72 m)	Continuous
170471	JC-4000-2550	4 in. (101.60 mm)	150 ft. (45.72 m)	Continuous

## Polyester Tags (B-2551)

- Thick, polyester tagstock is compliant for accident prevention (OSHA 1910.145) and lockout (OSHA 1910.147) tags
- Ideal for confined space, lockout, maintenance and energy source tags and labels, warehouse marking, and visual workplace labelling



Part No.	Description	Width Inch (mm)	Height Inch (mm)	Labels Per Roll
170467	J-374-2551	3 in. (76.20 mm)	1.50 in. (38.10 mm)	500
170466	J-392-2551	3.25 in. (82.55 mm)	5.25 in. (133.35 mm)	200
176589	JC-2500-2551	2.50 in. (63.50 mm)	50 ft. (15.24 m)	Continuous
170468	JC-3250-2551	3.25 in. (82.55 mm)	50 ft. (15.24 m)	Continuous

## Polyester Labels (B-2569)

- This versatile solution fits a wide range of applications on smooth surfaces
- Ideal for Lean/5S, general facility, pipe marking, OSHA/ANSI, PPE, machine labels, instructional signage, diagrams, quality and control labelling, and lockout tagout identification



Part No.	Description	Width Inch (mm)	Height Inch (mm)	Labels Per Roll
176600	J-260-2569	2.17 in. (55.19 mm)	3.35 in. (85.10 mm)	500
170453	J-261-2569	2.95 in. (74.93 mm)	4.33 in. (110.00 mm)	300
170454	J-262-2569	4.13 in. (104.90 mm)	6.1 in. (154.94 mm)	250
176625	J-371-2569	3.50 in. (88.90 mm)	5 in. (127.00 mm)	300
176624	J-391-2569	3.25 in. (82.55 mm)	2.25 in. (57.15 mm)	500
176577	JC-1125-2569	1.125 in. (28.58 mm)	150 ft. (45.72 m)	Continuous
176578	JC-2250-2569	2.25 in. (57.15 mm)	150 ft. (45.72 m)	Continuous
170452	JC-4000-2569	4 in. (101.60 mm)	150 ft. (45.72 m)	Continuous

## Repositionable Vinyl Labels (B-2581)

- Specialised adhesive lets you stick, unstick and reposition with ease
- Ideal for Lean/5S and work in process labelling as well as warehousing racks, bins and storage



Part No.	Description	Width Inch (mm)	Height Feet (m)	Labels Per Roll
170455	JC-1125-2581	1.125 in. (28.58 mm)	150 ft. (45.72 m)	Continuous
170456	JC-2250-2581	2.25 in. (57.15 mm)	150 ft. (45.72 m)	Continuous
170457	JC-4000-2581	4 in. (101.60 mm)	150 ft. (45.72 m)	Continuous

## BS 5609 Marine Labels (B-2585)

- BS 5609 Sections 2 and 3 certified to ensure labels stay compliant, stuck and seen during marine transport
- Ideal for GHS, hazardous materials, drum labelling, marine, transportation (DOT), storage and pharmaceutical labelling



Part No.	Description	Width Inch (mm)	Height Inch (mm)	Labels Per Roll
176619	J-260-2585	2.17 in. (55.19 mm)	3.35 in. (85.10 mm)	500
170470	J-261-2585	2.95 in. (74.93 mm)	4.33 in. (110.00 mm)	300
176620	J-262-2585	4.13 in. (104.90 mm)	6.1 in. (154.94 mm)	250
176586	JC-2250-2585	2.25 in. (57.15 mm)	150 ft. (45.72 m)	Continuous
170469	JC-4000-2585	4 in. (101.60 mm)	150 ft. (45.72 m)	Continuous

## Vinyl Material (B-2595)

- Low-shrink vinyl with ultra-aggressive adhesive is versatile for the widest array of applications
- Ideal for Lean/5S, general facility, pipe marking, OSHA/ANSI, PPE, machine labels and tags, quality and control, lockout, GHS and chemical, warehousing, general laboratory and more



Part No.	Description	Width Inch (mm)	Height Inch (mm)	Labels Per Roll
170459	J-179-2595	1 in. (25.40 mm)	1 in. (25.40 mm)	1000
176602	J-18-2595	3 in. (76.20 mm)	1 in. (25.40 mm)	1000
176601	J-260-2595	2.17 in. (55.19 mm)	3.35 in. (85.10 mm)	500
176603	J-261-2595	2.95 in. (74.93 mm)	4.33 in. (110.00 mm)	300
176604	J-262-2595	4.13 in. (104.90 mm)	6.1 in. (154.94 mm)	250
176628	J-372-2595	2.88 in. (73.03 mm)	1.50 in. (38.10 mm)	1000
176629	J-373-2595	3.88 in. (98.43 mm)	1.90 in. (48.26 mm)	500
176626	J-386-2595	1.50 in. (38.10 mm)	1.50 in. (38.10 mm)	1000
176627	J-387-2595	2 in. (50.80 mm)	2 in. (50.80 mm)	500
170476	J-388-2595	1 in. (25.40 mm)	Diameter (circle)	500
176630	J-389-2595	1.50 in. (38.10 mm)	Diameter (circle)	500
170477	J-390-2595	2 in. (50.80 mm)	Diameter (circle)	500
176580	JC-1125-2595	1.125 in. (28.58 mm)	150 ft. (45.72 m)	Continuous
176581	JC-2250-2595	2.25 in. (57.15 mm)	150 ft. (45.72 m)	Continuous
176582	JC-3000-2595	3 in. (76.20 mm)	150 ft. (45.72 m)	Continuous
170458	JC-4000-2595	4 in. (101.60 mm)	150 ft. (45.72 m)	Continuous
176648	JPSL-18-2595	3 in. (76.20 mm)	1 in. (25.40 mm)	750
176655	JPSL-260-2595	2.17 in. (55.19 mm)	3.35 in. (85.10 mm)	300
176657	JPSL-261-2595	2.95 in. (74.93 mm)	4.33 in. (110.00 mm)	250

## Water Dissolvable Paper Labels (B-403)

- Complete label and adhesive removal in 30 seconds using warm water
- Ideal for laboratories, temporary identification needs and work in process



Part No.	Description	Width Inch (mm)	Height Feet (m)	Labels Per Roll
170460	JC-2250-403	2.25 in. (57.15 mm)	150 ft. (45.72 m)	Continuous
170461	J-17-403	2 in. (50.80 mm)	1 in. (25.40 mm)	1000
176605	J-19-403	3 in. (76.20 mm)	2 in. (50.80 mm)	750
170462	J-55-403	4 in. (101.60 mm)	2 in. (50.80 mm)	750
176583	JC-1125-403	1.125 in. (28.58 mm)	150 ft. (45.72 m)	Continuous

## Chemical Resistant Polypropylene Material (B-7425J)

- Built tough to outlast liquid nitrogen, autoclave conditions and harsh chemicals
- Ideal for laboratory labelling (specimen, slide, tube and vial) as well as GHS, hazardous materials, drums, transportation (DOT) and pharmaceutical applications



Part No.	Description	Width Inch (mm)	Height Inch (mm)	Labels Per Roll
176608	J-136-7425J	1.50 in. (38.10 mm)	0.75 in. (19.05 mm)	1000
176611	J-137-7425J	2 in. (50.80 mm)	1 in. (25.40 mm)	1000
170479	J-152-7425J	1 in. (25.40 mm)	0.375 in. (9.53 mm)	1000
170478	J-156-7425J	1.90 in. (48.26 mm)	1 in. (25.40 mm)	1000
176606	J-179-7425J	1 in. (25.40 mm)	1 in. (25.40 mm)	1000
176615	J-18-7425J	3 in. (76.20 mm)	1 in. (25.40 mm)	1000
176616	J-19-7425J	3 in. (76.20 mm)	2 in. (50.80 mm)	750
176609	J-235-7425J	1.50 in. (38.10 mm)	1 in. (25.40 mm)	1000
176631	J-249-7425J	1 in. (25.40 mm)	0.375 in. (9.53 mm)	1000
176633	J-251-7425J	1 in. (25.40 mm)	0.50 in. (12.70 mm)	1000
170464	J-256-7425J	1.30 in. (33.02 mm)	0.60 in. (15.24 mm)	1000
176610	J-258-7425J	1.50 in. (38.10 mm)	1.75 in. (44.45 mm)	1000
176614	J-260-7425J	2.17 in. (55.19 mm)	3.35 in. (85.10 mm)	500
176617	J-261-7425J	2.95 in. (74.93 mm)	4.33 in. (110.00 mm)	300
176618	J-262-7425J	4.13 in. (104.90 mm)	6.1 in. (154.94 mm)	250
176635	J-37-7425J	0.50 in. (12.70 mm)	1.50 in. (38.10 mm)	1000
176636	J-371-7425J	3.50 in. (88.90 mm)	5 in. (127.00 mm)	300
176613	J-53-7425J	2 in. (50.80 mm)	0.50 in. (12.70 mm)	1000
176607	J-59-7425J	1 in. (25.40 mm)	0.50 in. (12.70 mm)	1000
176634	J-88-7425J	1 in. (25.40 mm)	0.75 in. (19.05 mm)	1000
176584	JC-1125-7425J	1.125 in. (28.58 mm)	150 ft. (45.72 m)	Continuous
176585	JC-2250-7425J	2.25 in. (57.15 mm)	150 ft. (45.72 m)	Continuous
170463	JC-4000-7425J	4 in. (101.60 mm)	150 ft. (45.72 m)	Continuous

## Acrylic Overlaminates (B-910)

- Enjoy long-lasting protection indoors and out with acrylic overlaminates for BradyJet labels, offering superior UV and abrasion resistance
- Available in precut sizes or continuous rolls



Part No.	Description	Width Inch (mm)	Height Inch (mm)	Labels Per Roll
149257	LAM-6000-910	6.50 in. (165.10 mm)	120 ft. (36.58 m)	Continuous
149258	LAM-4000-910	4.5 in. (114.30 mm)	120 ft. (36.58 m)	Continuous
149259	LAM-2250-910	2.75 in. (69.85 mm)	120 ft. (36.58 m)	Continuous
149260	LAM-8000-910	8.5 in. (215.90 mm)	120 ft. (36.58 m)	Continuous
175440	LAM-260-910	3.6 in. (91.44 mm)	2.42 in. (61.47 mm)	340
175441	LAM-261-910	4.58 in. (116.33 mm)	3.2 in. (81.28 mm)	270
175442	LAM-262-910	6.35 in. (161.29 mm)	4.38 in. (111.25 mm)	200
175443	LAM-265-910	7.25 in. (184.15 mm)	10.25 in. (260.35 mm)	100
175444	LAM-267-910	8.55 in. (217.17 mm)	6.35 in. (161.29 mm)	120

## PermaShield™ Labels (B-996)

- 2-in-1 package that includes a printable label (polyester or vinyl options) plus matching clear polyester overlaminates
- Ideal for a wide variety of applications requiring added durability, including product labelling, logos, Right to Know labels, barcodes and safety signs



Part No.	Description	Width Inch (mm)	Height Inch (mm)	Labels Per Roll
176651	JPSL-136-2475 (UL Listed)	1.50 in. (38.10 mm)	0.75 in. (19.05 mm)	800
176652	JPSL-137-2475 (UL Listed)	2 in. (50.80 mm)	1 in. (25.40 mm)	800
176649	JPSL-18-2475 (UL Listed)	3 in. (76.20 mm)	1 in. (25.40 mm)	800
176650	JPSL-19-2475 (UL Listed)	3 in. (76.20 mm)	2 in. (50.80 mm)	500
176653	JPSL-235-2475 (UL Listed)	1.50 in. (38.10 mm)	1 in. (25.40 mm)	800
176654	JPSL-260-2569 (UL Listed)	2.17 in. (55.19 mm)	3.35 in. (85.10 mm)	300
176656	JPSL-261-2569 (UL Listed)	2.95 in. (74.93 mm)	4.33 in. (110.00 mm)	250
176648	JPSL-18-2595	3 in. (76.20 mm)	1 in. (25.40 mm)	750
176655	JPSL-260-2595	2.17 in. (55.19 mm)	3.35 in. (85.10 mm)	300
176657	JPSL-261-2595	2.95 in. (74.93 mm)	4.33 in. (110.00 mm)	250

## Printer Specifications

Ink Cartridges	
176504	J7300 CMY Ink Cartridge (32 mL)
176505	J7300 K Ink Cartridge (37 mL)
Software and Connectivity	
<b>Connectivity Options</b>	Standard: USB 2.0, Ethernet, WiFi option
<b>Compatible PC Software</b>	Brady Workstation, Windows Driver with 3rd party software
<b>PC Connect or Standalone Operation</b>	PC connect
<b>Operating Systems</b>	Windows® 10 or higher
Physical/Operational Characteristics	
<b>Dimensions</b>	14.8"W x 9.09"H x 20.3"D (376.3mmW x 515.7mmH x 230.9mmD)
<b>Weight</b>	18 lbs. (8.2 kg)

Printer Features	
<b>Typical Throughput</b>	5,000 labels per day
<b>Printer Technology</b>	Thermal inkjet
<b>Colour Capabilities</b>	Full colour (cyan, magenta, yellow ink cartridge; black ink cartridge)
<b>Print Resolution</b>	4800 dpi
<b>Liner Width</b>	0.70" (19.00mm) to 4.25" (108mm)
<b>Media Width</b>	1.125" (28.58mm) to 4.25" (108mm)
<b>Print Length</b>	0.25" (6.35mm) to 48" (1219.2mm)
<b>Ink and Material Installation</b>	Material: 3 in / 75 mm core integrated roll Ink: Ink and Printhead Cartridge
<b>Print Speed</b>	1.2 in / 30.5 mm per second
<b>Printer Includes</b>	(1) BradyJet™ J7300 Printer; (1) Free Brady Workstation Basic Design Suite Download; (1) CMY Ink Cartridge with Built-in Printhead; (1) K Ink Cartridge with Built-in Printhead; (1) J-Align, media starter roll 4" wide B-2595 Vinyl; (1) AC adapter; (1) Power Cord; (1) USB Cable; (1) USB Flash Drive with Drivers and Manuals
<b>Indicator Lights</b>	Power, Materials



We make products that make the world a safer and smarter place. From the depths of the ocean to outer space, from the factory floor to the delivery room — **we're just about everywhere you look.**

- ▶ For more information or to learn more about our innovative products, visit [BradyID.com.au](https://BradyID.com.au) or call 1800 620 816.

Australia  
Customer Service: 1800 620 816  
[BradyID.com.au](https://BradyID.com.au)